

The Sify logo is positioned in the top right corner. It consists of the word "sify" in a lowercase, sans-serif font, with a small square dot above the final 'y'. The background of the entire page is a dark grey grid of small circles, with several vertical dashed lines of small squares extending upwards from the bottom towards the top.

Tried. ■ Tested. ■ Trusted. ■

Your Digital Infrastructure Partner
for over 25 years

Hyperscale, Hyperconnected, Green, AI-ready Data Centers



Our AI-ready Hyperscale Data Center Campus



**MUMBAI 03
RABALE**

Operational: 2014 | IT Power: 377+ MW
Tower 5 now live | Upcoming 7 new towers



NOIDA 02

Operational: 2024 onwards
IT Power: 130+ MW



**CHENNAI 02
SIRUSERI**

Operational: 2024 onwards
IT Power: 130+ MW



**HYDERABAD 02
FAB CITY**

Operational: 2025 onwards
IT Power: 250+ MW



**BENGALURU 02
AEROSPACE PARK**

Operational: 2025 onwards
IT Power: 40+ MW

Our Data Center Footprint

Mumbai 01: Vashi
Type: India's 1st commercial Data Center
Operational: 2000
IT Power: 0.9 MW



Mumbai 02: Airoli
Type: Sify's 1st Cloud Data Center
Operational: 2008
IT Power: 5.4 MW



Mumbai 03: Rabale
Type: AI-ready Hyperscale Data Center Campus
Operational: 2014 | **IT Power:** 377+ MW
Tower 5 now live | 7 new towers to be operational in the coming years



Noida 01:
Type: North India's 1st Hyperscale Data Center
Operational: 2012
IT Power: 10.8 MW



Noida 02:
Type: AI-ready Hyperscale Data Center Campus
Operational: Tower B: 2024
Tower A & C to be operational in the coming years
IT Power: 130+ MW



Hyderabad 01: Financial District
Type: Hyperscale Data Center
Operational: 2019
IT Power: 14.4 MW



Hyderabad 02: Fab City
Type: AI-ready Hyperscale Data Center Campus
Operational: 2025 onwards
IT Power: 250+ MW



Bengaluru 01: Electronic City
Type: Purpose-built Data Center
Operational: 2006
IT Power: 7.6 MW



Bengaluru 02: KIADB Aerospace Park
Type: AI-ready Hyperscale Data Center Campus
Operational: 2025
IT Power: 40+ MW



Chennai 01: TIDEL Park
Operational: 2001
IT Power: 3.6 MW



Chennai 02: Siruseri
Type: AI-ready Hyperscale Data Center Campus
Operational: Tower B: 2024
Tower A and C to be operational in the coming years
IT Power: 130+ MW



Kolkata:
Type: Cloud Data Center
Operational: 2019
IT Power: 2.2 MW



14 pan-India Data Centers
with 227+ MW IT power
expanding to 407+ MW by 2025

ESG Focus



Data Center MEP

High efficiency for Equipment even at low utilization levels.

- Selection of equipment with high energy saving parameters.

- Right redundancy levels



Sustainable Processes

ASHRAE Guidelines

- ISO 14001 Environmental Certification

- Carbon abatement policy

- Low PUE, WUE



Green Power Contracts

Contracted 231 MW Green power via Power Purchase Agreements.

- Additional nation-wide Green power for future projects. ~500MW planned to meet long-term sustainability goals

- Up to 70% Green Power available in Mumbai



Future Roadmap

To become RE100 (Carbon Neutral) by 2030. 29% GHG emission reduction by FY2025

- Exploring options to secure up to highest RE penetration for Sify DCs, as permitted by regulation

- Targeting high level of Renewable Energy penetration by year 2025

- Chennai 60%
Mumbai: 60%-70%
Noida: 30%
Bengaluru: 80%-90%

Take Advantage of Data Center Automation

Automating critical processes in your Data Center, such as application delivery, monitoring, scheduling, and maintenance, can be extremely beneficial.

Sify Data Centers offer various automation benefits like real-time visibility into key Data Center operations and assets, and optimum utilization of resource capacity.

This ensures accurate demand forecasting and capacity planning to help you proactively eliminate downtime.

Real-time Visibility ● **Measurability** ● **Predictability** ● **Efficiency**

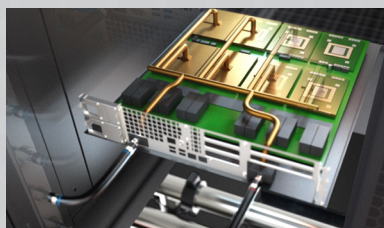
AI-ready Data Centers

Host AI and power dense workloads, up to 200 KW power/rack
Hybrid liquid cooling for high density AI based deployments

India's first NVIDIA certified DGX-Ready Data Center Service Provider for Liquid Cooling



Rear door heat exchanger
Ideal for 20-50 KW Rack load

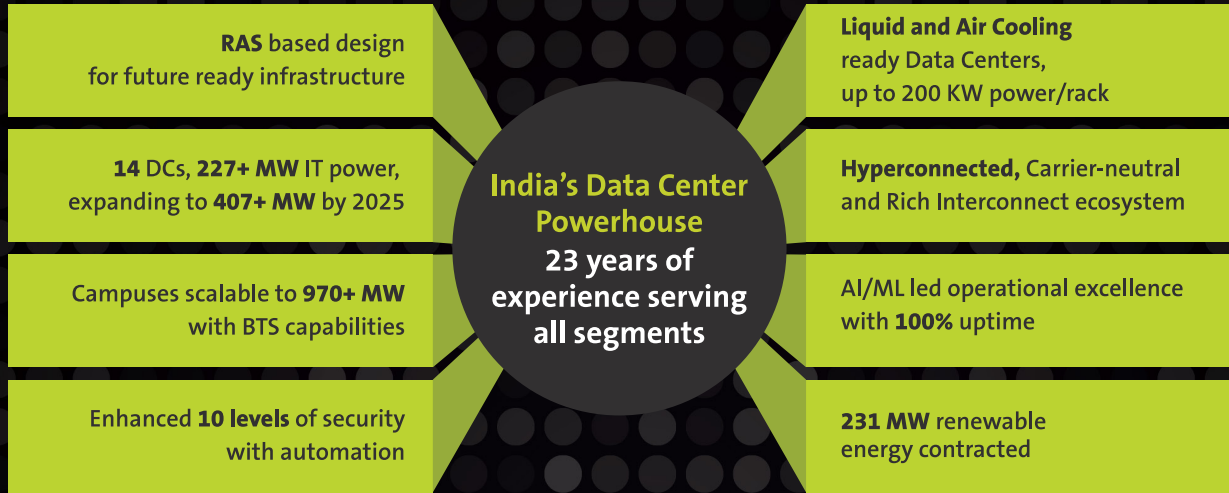


Direct-to-chip
Ideal for 50-150 KW Rack load

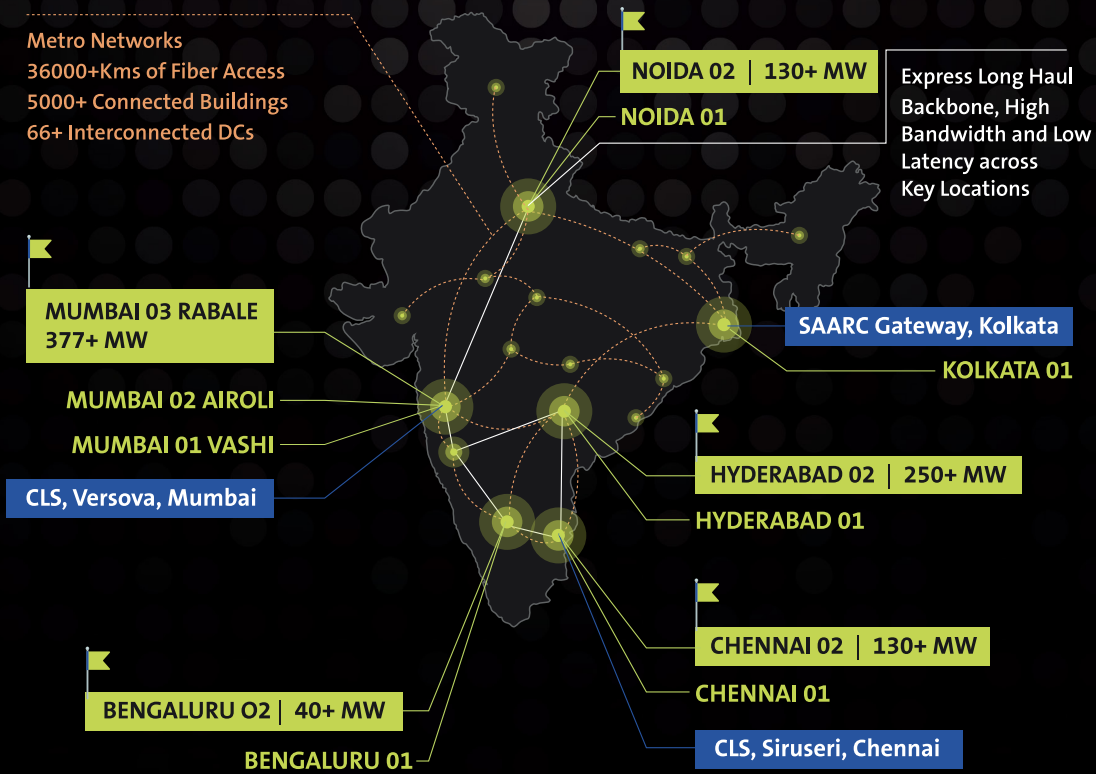


Liquid immersion cooling
Ideal for 50-200 KW Rack load

Future ready Digital Data Center infrastructure



India's Top 5 Banks, Top 4 Manufacturing, 3 Major Hyperscalers, Global Social Media, OTT Players, and 10K+ Enterprises trust Sify



Sify Digital ICT services with **Agility, Flexibility, Choices** to empower your **Digital Transformation**

- Network Infra Services
- Network Digital Managed Services
- Data Center Colo Services
- CloudInfini Ent Cloud Infra
- Cloud & IT Managed Services
- Digital Apps Managed Services
- Industry Apps Managed Services
- Security Managed Services

Trusted by Leading Enterprises across the Globe



3 out of 4 hyperscalers are hosted with Sify



Global OTT players chose Sify's Data Center to connect to millions of subscribers



World's leading social media network is hosted in Sify's Data Center



Europe's leading payment gateway provider chose Sify's Data Center



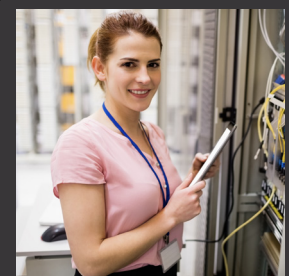
India's top 5 banks are hosted with Sify



India's largest digital wallet and new-age fintechs are hosted with Sify



India's largest general insurance company and large NBFCs chose Sify's Data Center

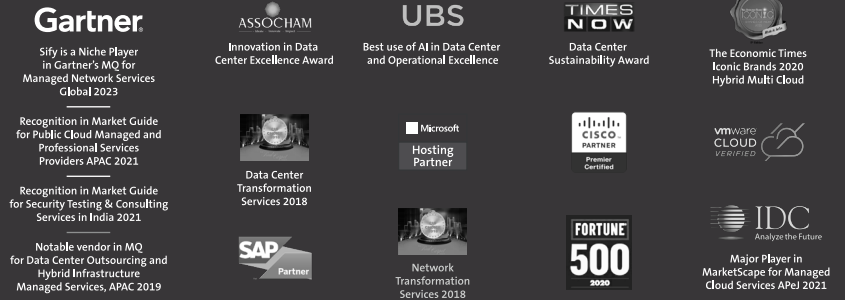


Sify's Data Centers host more than 600+ premier enterprises across industries

Certifications



Recognitions



Harness the power of Sify's Hyperscale, Hyperconnected, Green, AI-ready Data Centers.

Sify Data Centers

Mumbai | Noida | Hyderabad | Bengaluru | Chennai | Kolkata



Reimagine your Data Center experience

